

# Cable Lugs Fork Type, Brazed

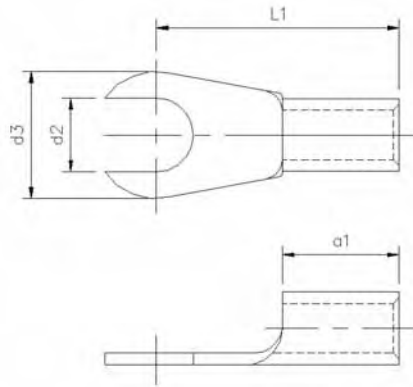
## Kabelschuhe Gabelform Gelötet

### Crochets de Câble Type

### Fourche, Soudé



FORK



Type	Wire Range	DIN	Nom. Size	a1	d2	d3	L1	Mat Thickness	E=Single B=Chain	Part Number	Material	Carton Size	Reel Size
Typ	Nennquerschnitt	DIN	Nom. Größe					Mat. dicke	E=Einzel B=Kette	Best Nr	Werkstoff	Menge pro Karton	Spulen größe
Type	Section câble	DIN	Nom. Taille					Epaisseur matériau	E=Simple B=Chaîne	Code Nr	Matière	Cartons à	Bobines à
1	10	46211 Form C	6x4.3	10.00	6.40	11.00	21.00	1.00	E	UTX03812-N01	SE-Cu Sn3	1000	
1	16	46211 Form C	6x5.4	11.50	6.40	11.00	24.00	1.00	E	UTX03824-N01	SE-Cu Sn3	600	
1	16	46211 Form C	8x5.4	11.50	8.40	15.00	27.00	1.00	E	UTX03818-N01	SE-Cu Sn3	500	

Germany +49 (0) 202 460 3468

Europe +421 43 583 1311

United Kingdom +44 (0) 1986 891516



making the connection



8.0 - 1.7

# Cable Lugs Fork Type, Brazed

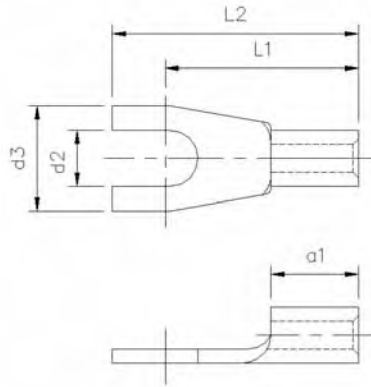
## Kabelschuhe Gabelform Gelötet

### Crochets de Câble Type

### Fourche, Soudé



FORK



Type	Wire Range	Nom. Size	a1	d2	d3	L1	L2	Mat. Thickness	E=Single B=Chain	Part Number	Material	Carton Size	Reel Size
Typ	Nennwert Schnitt	Nom. Größe						Mat. dicke	E=Einzel B=Kette	Best nr	Werkstoff	Menge pro Karton	Spulen Größe
Type	Section Range	Nom. Taille						Epaisseur matériau	E=Simple B=Chaîne	Code nr	Matière	Cartons à	Bobines à

1	0.5-1	3-1	5.00	3.20	6.00	11.00	14.00	0.80	E	UTX03462-N01	SE-Cu Sn3	5000	
1	0.5-1	3.5-1	5.00	3.70	6.00	11.00	14.00	0.80	E	UTX03463-N01	SE-Cu Sn3	5000	
1	0.5-1	3.5-1	5.00	3.70	6.80	12.00	15.40	0.80	E	UTX03470-N01	SE-Cu Sn3	3000	
1	0.5-1	4.1	5.00	4.30	6.80	12.00	15.40	0.80	E	UTX03464-N01	SE-Cu Sn3	5000	
1	0.5-1	5.1	5.00	5.30	10.00	13.00	18.00	0.80	E	UTX03476-N01	SE-Cu Sn3	2500	
1	0.5-1	6.1	5.00	6.50	11.00	15.00	20.50	0.80	E	UTX03477-N01	SE-Cu Sn3	2500	
1	1.5-2.5	3-2.5	5.00	3.20	5.50	13.80	17.00	0.80	E	UTX03478-N01	SE-Cu Sn3	4000	
1	1.5-2.5	3-2.5	5.00	3.20	6.00	11.00	14.00	0.80	E	UTX03469-N01	SE-Cu Sn3	4000	
1	1.5-2.5	3.5-2.5	5.00	3.70	6.00	11.00	14.00	0.80	E	UTX03479-N01	SE-Cu Sn3	4000	
1	1.5-2.5	3.5-2.5	5.00	3.70	6.80	12.00	15.40	0.80	E	UTX03458-N01	SE-Cu Sn3	4000	
1	1.5-2.5	4-2.5	5.00	4.30	6.80	12.00	15.40	0.80	E	UTX03459-N01	SE-Cu Sn3	4000	
1	1.5-2.5	5-2.5	5.00	5.30	10.00	14.00	19.00	0.80	E	UTX03465-N01	SE-Cu Sn3	2500	
1	1.5-2.5	6-2.5	5.00	6.50	11.00	16.00	21.50	0.80	E	UTX03480-N01	SE-Cu Sn3	2000	
1	4-6	3.5-6	6.00	3.70	7.20	14.00	18.00	1.00	E	UTX03455-N01	SE-Cu Sn3	2000	
1	4-6	4-6	6.00	4.30	8.00	14.00	18.00	1.00	E	UTX03460-N01	SE-Cu Sn3	2000	
1	4-6	5-6	6.00	5.30	10.00	15.00	20.00	1.00	E	UTX03466-N01	SE-Cu Sn3	1500	
1	4-6	6-6	6.00	6.50	11.00	16.00	21.50	1.00	E	UTX03467-N01	SE-Cu Sn3	1500	
1	4-6	9-6	6.00	8.40	14.00	19.00	26.00	1.00	E	UTX03483-N01	SE-Cu Sn3	1000	

Germany +49 (0) 202 460 3468

Europe +421 43 583 1311

United Kingdom +44 (0) 1986 891516



making the connection



FM 09860

8.0 - 1.9