

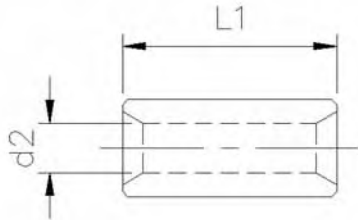
Parallel Connectors

Parallelverbinder

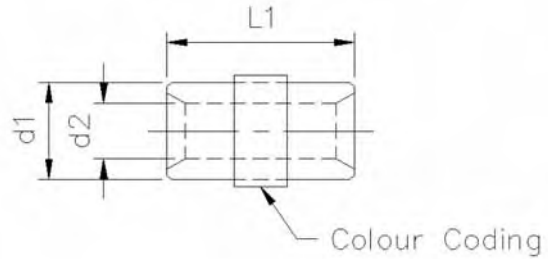
Connecteurs Parallèles



PARALLEL



Type I



Type II

Type	Wire Range	DIN	Nom. Size	d1	d2	L1	Mat Thickness	E=Single B=Chain	Part Number	Material	Carton Size	Reel Size
Typ	Nennquer Schnitt	DIN	Nom. Größe				Mat. dicke	E=Einzel B=Kette	Best nr	Werkstoff	Menge pro Karton	Spulen Größe
Type	Section Range	DIN	Nom. Taille				Epaisseur matériau	E=Simple B=Chaîne	Code nr	Matière	Cartons à	Bobines à

1	0.5-1		1		1.60	7.00	0.80	E	UTX04016-N01	E/SE-Cu Sn3	5000	
1	1.5-2.5	46341 Teil 1 Form A	2.5		2.30	7.00	0.80	E	UTX04001-N01	E/SE-Cu Sn3	4000	
1	2.5-4		4		3.00	7.00	1.00	E	UTX04002-N01	E/SE-Cu Sn3	3500	
1	4-6	46341 Teil 1 Form A	6		3.60	7.00	1.00	E	UTX04003-N01	E/SE-Cu Sn3	3500	
1	4-6	46341 Teil 1 Form A	6		3.60	7.00	1.00	E	UTX04003-N01	E/SE-Cu Ni3	3500	
1	6-10	46341 Teil 1 Form A	10		4.50	10.00	1.10	E	UTX04004-N01	E/SE-Cu Sn3	1750	
1	9-12		12		5.10	10.00	1.10	E	UTX04021-N01	E/SE-Cu Sn3	1500	
1	10-16	46341 Teil 1 Form A	16		5.80	11.00	1.20	E	UTX04005-N01	E/SE-Cu Sn3	1000	
1	16-25	46341 Teil 1 Form A	25		7.50	14.00	1.50	E	UTX04006-N01	E/SE-Cu Sn3	500	
1	25-35	46341 Teil 1 Form A	35		9.00	16.00	1.60	E	UTX04007-N01	E/SE-Cu Sn3	300	
1	35-50	46341 Teil 1 Form A	50		11.00	19.00	1.80	E	UTX04008-N01	E/SE-Cu Sn3	200	
1	50-70	46341 Teil 1 Form A	70		13.00	19.00	2.00	E	UTX04009-N01	E/SE-Cu Sn3	125	
1	70-95	46341 Teil 1 Form A	95		15.00	20.00	2.50	E	UTX04010-N01	E/SE-Cu Sn3	75	
1	95-120	46341 Teil 1 Form A	120		16.50	22.00	3.00	E	UTX04011-N01	E/SE-Cu Sn3	75	
2	0.7-2.5			5.5	2.30	10.00		E	UTX04000-N01	SE-Cu Sn3	2000	
2	4-5.5		6	5.5	3.40	10.00		E	UTX04031-N01	SE-Cu Sn3	2500	
2	5.5-9.5		10	7.1	4.40	10.00		E	UTX04032-N01	SE-Cu Sn3	1750	
2	9.5-15.5		16	9	5.80	10.00		E	UTX04033-N01	SE-Cu Sn3	1000	
2	15.5-25		25	11.5	7.70	10.00		E	UTX04034-N01	SE-Cu Sn3	600	
2	25-35		35	13.3	9.00	10.00		E	UTX04035-N01	SE-Cu Sn3	400	

Germany +49 (0) 202 460 3468

Europe +421 43 583 1311

United Kingdom +44 (0) 1986 891516



making the connection



8.0 - 2.1