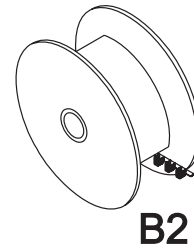
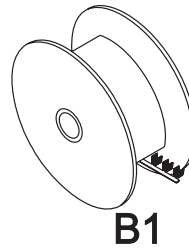
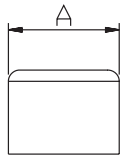
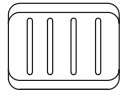


Splice Terminals

Clipse

Connecteurs Embout



Wire Range	Reel Orient	Max Insertion	Mat Thickness	Material	A	B	C	Y	Reel Size	Carton Size	Part Number	Approvals
Nennquerschnitt	Abspulrichtung	Stift	Mat. dicke	Werkstoff	A	B	C	Y	Spulengröße	Menge pro Karton	Best Nr	Zulassungen
Section câble	Sens de déroulement	Gaine	Épaisseur matériau	Matière					Bobines à	Cartons à	Code Nr	Homologations

In Line Reeling

0.7-1.5	-	-	0.45	CuZn	5.8	-	-	-	30K	90K	SP-CFB	
0.7-1.5	-	-	0.45	CuNi Zn	5.8	-	-	-	30K	90K	SP-CFD	
0.4-1.0	-	-	0.5	St gal Ni	5.7	-	-	-	16K	96K	SP-CCE	
2.1-5.2	B1	-	0.8	St gal Ni	5.7	-	-	-	6K	18K	SP-AJE	
2.1-5.2	B1	-	0.5	CuZn	5.7	-	-	-	6K	18K	SP-AJB-2	
2.1-5.2	B2	-	0.5	CuZn	5.7	-	-	-	6K	18K	SP-BJB	
2.1-5.2	B2	-	0.8	St gal Ni	5.7	-	-	-	6K	18K	SP-BJE	

Magnet Wire Type

0.75-1.0	-	-	0.8	CuZn gal Sn	5.5	-	-	-	30K	90K	SP-CDC	
0.6-1.4	-	-	0.8	CuZn gal Sn	5.5	-	-	-	30K	90K	SP-CEC	
1.0-2.5	-	-	0.8	CuZn gal Sn	5.5	-	-	-	30K	90K	SP-CHC	

Germany +49 (0) 202 460 3468

Europe +421 43 583 1311

United Kingdom +44 (0) 1986 891516



making the connection



FM 09860

6.0 - 1.1

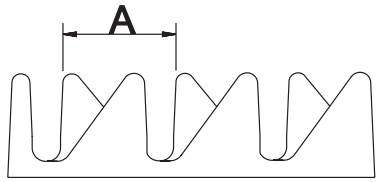
Splice Terminals

Clipse

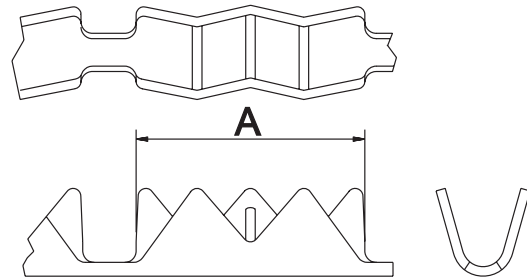
Connecteurs Embout



SPLICE



SH-CDB TO SH-CEC



SH-CDB-2 TO SH-CDA

Wire Range	Reel Orient	Max Insertion	Mat Thickness	Material	A	B	C	Y	Reel Size	Carton Size	Part Number	Approvals
Nennquerschnitt	Abspulrichtung	Stift	Mat. dicke	Werkstoff	A	B	C	Y	Spulengröße	Menge pro Karton	Best Nr	Zulassungen
Section câble	Sens de déroulement	Gaine	Epaisseur matériau	Matière					Bobines à	Cartons à	Code Nr	Homologations

Terminals

0.5-1.0	-	-	0.25	CuZn	2.2	-	-	-	90K	270K	SH-CDB	
0.5-1.0	-	-	0.25	CuZn gal Sn	2.2	-	-	-	90K	270K	SH-CDC	
1.0-2.5	-	-	0.25	CuZn	2.2	-	-	-	90K	270K	SH-CEB	
1.0-2.5	-	-	0.25	CuZn gal Sn	2.2	-	-	-	90K	270K	SH-CEC	
0.5-1.0	-	-	0.25	CuZn	6.0	-	-	-	30K	90K	SH-CDB-2	
0.5-1.0	-	-	0.25	CuZn gal Sn	6.0	-	-	-	30K	90K	SH-CDC-2	
0.5-1.0	-	-	0.25	CuNi Zn	6.0	-	-	-	30K	90K	SH-CDD	
0.5-1.0	-	-	0.25	St gal Ni	6.0	-	-	-	30K	90K	SH-CDE	
0.5-1.0	-	-	0.25	CuSn	6.0	-	-	-	30K	90K	SH-CDA	

Germany +49 (0) 202 460 3468

Europe +421 43 583 1311

United Kingdom +44 (0) 1986 891516



making the connection



6.0 - 1.2

Splice Terminals

Aderendhülsen Din 46228 Form B

Connecteurs Embout



Wire Range	Reel Orient	Max Insertion	Mat Thickness	Material	A	B	C	Y	Reel Size	Carton Size	Part Number	Approvals
Nennquerschnitt	Abspulrichtung	Stift	Mat. dicke	Werkstoff	A	B	C	Y	Spulengröße	Menge pro Karton	Best Nr	Zulassungen
Section câble	Sens de déroulement	Gaine	Epaisseur matériau	Matière					Bobines à	Cartons à	Code Nr	Homologations

Splice with Insulation Support

0.5 - 1.0	-	-	0.3	CuZn	11.0	7.0	-	12.5	20K	60K	SH-CDB-D	
0.5 - 1.0	-	-	0.3	CuZn gal Sn	11.0	7.0	-	12.5	20K	60K	SH-CDC-D	
0.5 - 1.0	-	-	0.3	CuSn	11.0	7.0	-	12.5	20K	60K	SH-CDA-D	
0.5 - 1.0	-	-	0.3	CuSn gal Sn	11.0	7.0	-	12.5	20K	60K	SH-CDG-D	
1.0 - 1.5	-	-	0.3	CuZn	11.0	7.0	-	12.5	20K	60K	SH-CEB-D	
1.0 - 1.5	-	-	0.3	CuZn gal Sn	11.0	7.0	-	12.5	20K	60K	SH-CEC-D	
1.0 - 1.5	-	-	0.3	St gal Ni	11.0	7.0	-	12.5	20K	60K	SH-CEE-D	

Germany +49 (0) 202 460 3468

Europe +421 43 583 1311

United Kingdom +44 (0) 1986 891516



making the connection



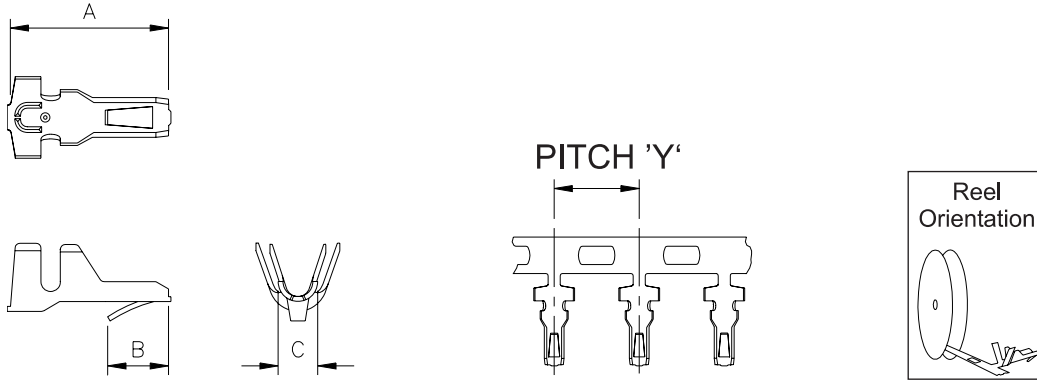
6.0 - 1.3

FM 09860

Through Board Splice

Löthilfen

Embout pour C.I.



Wire Range	Reel Orient	Max Insertion	Mat Thickness	Material	A	B	C	Y	Reel Size	Carton Size	Part Number	Approvals
Nennquerschnitt	Abspulrichtung	Stift	Mat. dicke	Werkstoff	A	B	C	Y	Spulengröße	Menge pro Karton	Best Nr	Zulassungen
Section câble	Sens de déroulement	Gaine	Epaisseur matériau	Matière					Bobines à	Cartons à	Code Nr	Homologations

0.12-0.35	-	1.5	0.2	CuZn gal Sn	6.5	2.5	1.2	7.0	10K	50K	SP-ALC	
0.3-0.8	-	2.5	0.2	CuZn gal Sn	6.5	2.5	1.6	7.0	10K	50K	SP-ABC	

Germany +49 (0) 202 460 3468

Europe +421 43 583 1311

United Kingdom +44 (0) 1986 891516



making the connection



FM 09860

6.0 - 1.4