

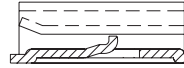
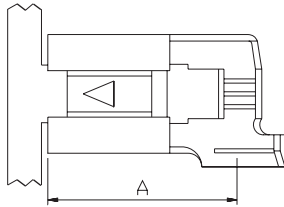
Flag Receptacles

Winkel- Flachsteckhülse
Mit Festverriegelung

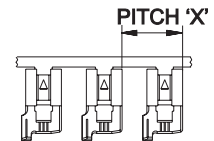
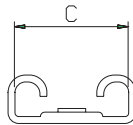
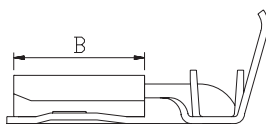
Clips Drapeaux



4.8
x 0.5



INTERNAL LOCKING
LATCH DETAIL
Mit festverriegelung
Avec verrouillage



Wire Range	Max.Ins	Tab Thickness	Mat Thickness	Material	A	B	C	X	Reel Size	Carton Size	Part Number	Approvals
Nennquerschnitt	Stift	Steckerdicke	Mat.dicke	Werkstoff					Spulen größe	Menge pro karton	Best Nr	Zulassungen
Section câble	Gaine	Epaisseur languette	Epaisseur matériau	Matériau					Bobines à	Cartons à	Code Nr	Homologations

0.4-1.0	3.3	0.5	0.4	CuZn	14.2	6.3	6.0	15.24	3K	24K	48FR05-10CB	UL
0.4-1.0	3.3	0.5	0.4	CuZn gal Sn	14.2	6.3	6.0	15.24	3K	24K	48FR05-10CC	UL
0.4-1.0	3.3	0.5	0.4	CuNi Zn	14.2	6.3	6.0	15.24	3K	24K	48FR05-10CD	UL
0.4-1.0	3.3	0.5	0.4	St gal Ni	14.2	6.3	6.0	15.24	3K	24K	48FR05-10CE	RA

Internal Locking Latch

0.4-1.0	3.3	0.5	0.30	CuSn	14.2	6.3	6.0	15.24	3K	24K	48FR05-14CA	UL
0.4-1.0	3.3	0.5	0.30	CuSn gal SN	14.2	6.3	6.0	15.24	3K	24K	48FR05-14CG	

0.4-1.0	3.6	0.5	0.4	CuZn	14.2	6.4	6.0	15.24	3K	9K	48FR05-10CB-2	
0.4-1.0	3.6	0.5	0.4	CuZn gal Sn	14.2	6.5	6.0	15.24	3K	9K	48FR05-10CC-2	
0.4-1.0	3.6	0.5	0.4	CuNi Zn	14.2	6.6	6.0	15.24	3K	9K	48FR05-10CD-2	
0.4-1.0	3.6	0.5	0.4	St gal Ni	14.2	6.7	6.0	15.24	3K	9K	48FR05-10CE-2	

Germany +49 (0) 202 460 3468

Europe +421 43 583 1311

United Kingdom +44 (0) 1986 891516



making the connection



FM 09860

2.0 - 2.0

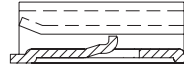
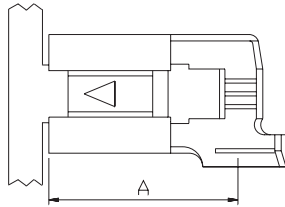
Flag Receptacles

Winkel- Flachsteckhülse
Mit Festverriegelung

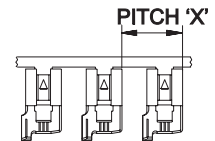
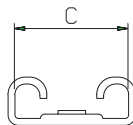
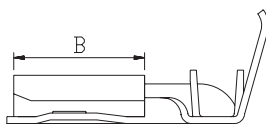
Clips Drapeaux



4.8
x 0.8



INTERNAL LOCKING
LATCH DETAIL
Mit festverriegelung
Avec verrouillage



Wire Range	Max.Ins	Tab Thickness	Mat Thickness	Material	A	B	C	X	Reel Size	Carton Size	Part Number	Approvals
Nennquerschnitt	Stift	Steckerdicke	Mat.dicke	Werkstoff	A	B	C	X	Spulen größe	Menge pro karton	Best Nr	Zulassungen
Section câble	Gaine	Epaisseur languette	Epaisseur matériau	Matériau					Bobines à	Cartons à	Code Nr	Homologations

0.4-1.0	3.3	0.8	0.4	CuZn	14.2	6.3	6.0	15.24	3K	24K	48FR08-10CB	UL
0.4-1.0	3.3	0.8	0.4	CuZn gal Sn	14.2	6.3	6.0	15.24	3K	24K	48FR08-10CC	UL
0.4-1.0	3.3	0.8	0.4	St gal Ni	14.2	6.3	6.0	15.24	3K	24K	48FR08-10CE	

Internal Locking Hatch

0.4-1.0	3.3	0.8	0.30	CuSn	14.2	6.3	6.0	15.24	3K	24K	48FR08-15CA	UL
0.4-1.0	3.6	0.8	0.4	CuZn	14.2	6.3	6.0	15.24	3K	24K	48FR08-10CB-2	
0.4-1.0	3.6	0.8	0.4	CuZn gal Sn	14.2	6.3	6.0	15.24	3K	24K	48FR08-10CC-2	
0.4-1.0	3.6	0.8	0.4	CuNi Zn	14.2	6.3	6.0	15.24	3K	24K	48FR08-10CD-2	
0.4-1.0	3.6	0.8	0.4	St gal Ni	14.2	6.3	6.0	15.24	3K	24K	48FR08-10CE-2	

Germany +49 (0) 202 460 3468

Europe +421 43 583 1311

United Kingdom +44 (0) 1986 891516



making the connection



2.0 - 2.1

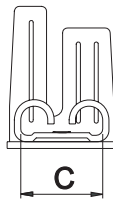
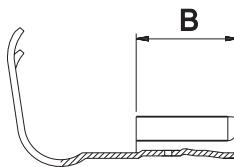
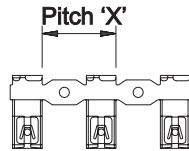
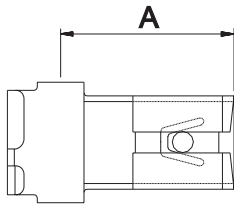
Flag Receptacles

Winkel- Flachsteckhülse

Clips Drapeaux



4.8
x 0.5



MATING FORCES			
1st Insertion	40N max	10th Withdrawal	15N min

Wire Range	Max.Ins	Tab Thickness	Mat Thickness	Material	A	B	C	X	Reel Size	Carton Size	Part Number	Approvals
Nennquerschnitt	Stift	Steckerdicke	Mat.dicke	Werkstoff	A	B	C	X	Spulen grösse	Menge pro karton	Best Nr	Zulassungen
Section câble	Gaine	Epaisseur languette	Epaisseur matériau	Matériau					Bobines à	Cartons à	Code Nr	Homologations

0.5-1.0	2.9	0.5	0.35	CuZn	10.8	6.3	5.2	14.5	3K	24K	48FR05-10DB	
0.5-1.0	2.9	0.5	0.35	CuZn gal Sn	10.8	6.3	5.2	14.5	3K	24K	48FR05-10DC	
0.5-1.0	2.9	0.5	0.35	CuSn	10.8	6.3	5.2	14.5	3K	24K	48FR05-10DA	
0.5-1.0	2.9	0.5	0.35	CuSn gal Sn	10.8	6.3	5.2	14.5	3K	24K	48FR05-10DG	
0.5-1.0	2.9	0.5	0.35	CuNi Zn	10.8	6.3	5.2	14.5	3K	24K	48FR05-10DD	
0.5-1.0	2.9	0.5	0.35	St gal Ni	10.8	6.3	5.2	14.5	3K	24K	48FR05-10DE	
1.0-2.5	3.3	0.5	0.35	CuZn	11.8	6.3	5.2	14.5	3K	24K	48FR05-10HB	
1.0-2.5	3.3	0.5	0.35	CuZn gal Sn	11.8	6.3	5.2	14.5	3K	24K	48FR05-10HC	
1.0-2.5	3.3	0.5	0.35	CuSn	11.8	6.3	5.2	14.5	3K	24K	48FR05-10HA	
1.0-2.5	3.3	0.5	0.35	CuSn gal Sn	11.8	6.3	5.2	14.5	3K	24K	48FR05-10HG	
1.0-2.5	3.3	0.5	0.35	CuNi Zn	11.8	6.3	5.2	14.5	3K	24K	48FR05-10HD	
1.0-2.5	3.3	0.5	0.35	St gal Ni	11.8	6.3	5.2	14.5	3K	24K	48FR05-10HE	

Germany +49 (0) 202 460 3468

Europe +421 43 583 1311

United Kingdom +44 (0) 1986 891516



making the connection



FM 09860

2.0 - 2.2

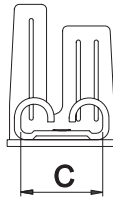
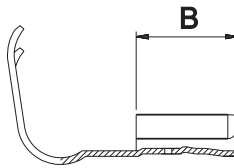
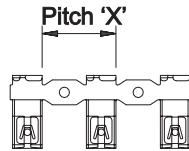
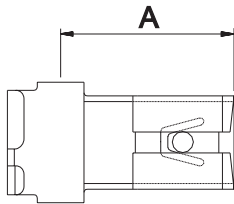
Flag Receptacles

Winkel- Flachsteckhülse

Clips Drapeaux



4.8
x 0.8



MATING FORCES

1st Insertion	40N max	10th Withdrawal	15N min
---------------	---------	-----------------	---------

Wire Range	Max.Ins	Tab Thickness	Mat Thickness	Material	A	B	C	X	Reel Size	Carton Size	Part Number	Approvals
Nennquerschnitt	Stift	Steckerdicke	Mat.dicke	Werkstoff					Spulen grösse	Menge pro karton	Best Nr	Zulassungen
Section câble	Gaine	Epaisseur languette	Epaisseur matériau	Matériau					Bobines à	Cartons à	Code Nr	Homologations

0.5-1.0	2.9	0.8	0.35	CuZn	10.8	6.3	5.2	14.5	3K	24K	48FR08-10DB	
0.5-1.0	2.9	0.8	0.35	CuZn gal Sn	10.8	6.3	5.2	14.5	3K	24K	48FR08-10DC	
0.5-1.0	2.9	0.8	0.35	CuSn	10.8	6.3	5.2	14.5	3K	24K	48FR08-10DA	
0.5-1.0	2.9	0.8	0.35	CuSn gal Sn	10.8	6.3	5.2	14.5	3K	24K	48FR08-10DG	
0.5-1.0	2.9	0.8	0.35	CuNi Zn	10.8	6.3	5.2	14.5	3K	24K	48FR08-10DD	
0.5-1.0	2.9	0.8	0.35	St gal Ni	10.8	6.3	5.2	14.5	3K	24K	48FR08-10DE	
1.0-2.5	3.3	0.8	0.35	CuZn	11.8	6.3	5.2	14.5	3K	24K	48FR08-10HB	
1.0-2.5	3.3	0.8	0.35	CuZn gal Sn	11.8	6.3	5.2	14.5	3K	24K	48FR08-10HC	
1.0-2.5	3.3	0.8	0.35	CuSn	11.8	6.3	5.2	14.5	3K	24K	48FR08-10HA	
1.0-2.5	3.3	0.8	0.35	CuSn gal Sn	11.8	6.3	5.2	14.5	3K	24K	48FR08-10HG	
1.0-2.5	3.3	0.8	0.35	CuNi Zn	11.8	6.3	5.2	14.5	3K	24K	48FR08-10HD	
1.0-2.5	3.3	0.8	0.35	St gal Ni	11.8	6.3	5.2	14.5	3K	24K	48FR08-10HE	

Germany +49 (0) 202 460 3468

Europe +421 43 583 1311

United Kingdom +44 (0) 1986 891516



making the connection



FM 09860

2.0 - 2.3

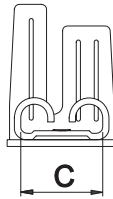
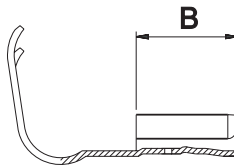
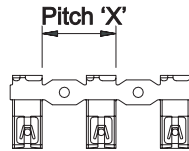
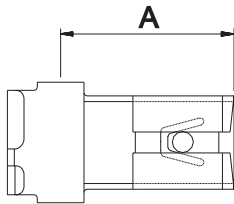
Flag Receptacles, Low Insertion

Winkel- Flachsteckhülse
Steckkraftreduziert

Clips Drapeaux, Insertion Basse



4.8
x 0.5



MATING FORCES			
1st Insertion	26N max	10th Withdrawal	15N min

Wire Range	Max.Ins	Tab Thickness	Mat Thickness	Material	A	B	C	X	Reel Size	Carton Size	Part Number	Approvals
Nennquerschnitt	Stift	Steckerdicke	Mat.dicke	Werkstoff					Spulen größe	Menge pro karton	Best Nr	Zulassungen
Section câble	Gaine	Epaisseur languette	Epaisseur matériau	Matériau					Bobines à	Cartons à	Code Nr	Homologations

0.5-1.0	2.9	0.5	0.35	CuZn	10.8	6.3	5.2	14.5	3K	24K	48FR05-20DB	
0.5-1.0	2.9	0.5	0.35	CuZn gal Sn	10.8	6.3	5.2	14.5	3K	24K	48FR05-20DC	
0.5-1.0	2.9	0.5	0.35	CuSn	10.8	6.3	5.2	14.5	3K	24K	48FR05-20DA	
0.5-1.0	2.9	0.5	0.35	CuSn gal Sn	10.8	6.3	5.2	14.5	3K	24K	48FR05-20DG	
0.5-1.0	2.9	0.5	0.35	CuNi Zn	10.8	6.3	5.2	14.5	3K	24K	48FR05-20DD	
0.5-1.0	2.9	0.5	0.35	St gal Ni	10.8	6.3	5.2	14.5	3K	24K	48FR05-20DE	
1.0-2.5	3.3	0.5	0.35	CuZn	11.8	6.3	5.2	14.5	3K	24K	48FR05-20HB	
1.0-2.5	3.3	0.5	0.35	CuZn gal Sn	11.8	6.3	5.2	14.5	3K	24K	48FR05-20HC	
1.0-2.5	3.3	0.5	0.35	CuSn	11.8	6.3	5.2	14.5	3K	24K	48FR05-20HA	
1.0-2.5	3.3	0.5	0.35	CuSn gal Sn	11.8	6.3	5.2	14.5	3K	24K	48FR05-20HG	
1.0-2.5	3.3	0.5	0.35	CuNi Zn	11.8	6.3	5.2	14.5	3K	24K	48FR05-20HD	
1.0-2.5	3.3	0.5	0.35	St gal Ni	11.8	6.3	5.2	14.5	3K	24K	48FR05-20HE	

Germany +49 (0) 202 460 3468

Europe +421 43 583 1311

United Kingdom +44 (0) 1986 891516



making the connection



FM 09860

2.0 - 2.4

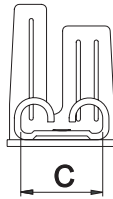
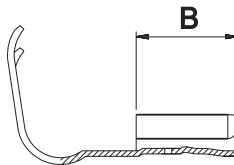
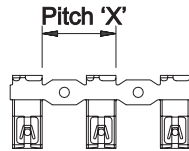
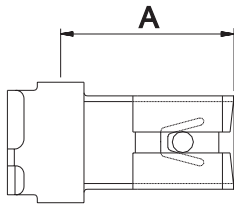
Flag Receptacles, Low Insertion

Winkel- Flachsteckhülse
Steckkraftreduziert

Clips Drapeaux, Insertion Basse



4.8
x 0.8



MATING FORCES

1st Insertion	26N max	10th Withdrawal	15N min
---------------	---------	-----------------	---------

Wire Range	Max.Ins	Tab Thickness	Mat Thickness	Material	A	B	C	X	Reel Size	Carton Size	Part Number	Approvals
Nennquerschnitt	Stift	Steckerdicke	Mat.dicke	Werkstoff					Spulen größe	Menge pro karton	Best Nr	Zulassungen
Section câble	Gaine	Epaisseur languette	Epaisseur matériau	Matériau					Bobines à	Cartons à	Code Nr	Homologations

0.5-1.0	2.9	0.8	0.35	CuZn	10.8	6.3	5.2	14.5	3K	24K	48FR08-20DB	
0.5-1.0	2.9	0.8	0.35	CuZn gal Sn	10.8	6.3	5.2	14.5	3K	24K	48FR08-20DC	
0.5-1.0	2.9	0.8	0.35	CuSn	10.8	6.3	5.2	14.5	3K	24K	48FR08-20DA	
0.5-1.0	2.9	0.8	0.35	CuSn gal Sn	10.8	6.3	5.2	14.5	3K	24K	48FR08-20DG	
0.5-1.0	2.9	0.8	0.35	CuNi Zn	10.8	6.3	5.2	14.5	3K	24K	48FR08-20DD	
0.5-1.0	2.9	0.8	0.35	St gal Ni	10.8	6.3	5.2	14.5	3K	24K	48FR08-20DE	
1.0-2.5	3.3	0.8	0.35	CuZn	11.8	6.3	5.2	14.5	3K	24K	48FR08-20HB	
1.0-2.5	3.3	0.8	0.35	CuZn gal Sn	11.8	6.3	5.2	14.5	3K	24K	48FR08-20HC	
1.0-2.5	3.3	0.8	0.35	CuSn	11.8	6.3	5.2	14.5	3K	24K	48FR08-20HA	
1.0-2.5	3.3	0.8	0.35	CuSn gal Sn	11.8	6.3	5.2	14.5	3K	24K	48FR08-20HG	
1.0-2.5	3.3	0.8	0.35	CuNi Zn	11.8	6.3	5.2	14.5	3K	24K	48FR08-20HD	
1.0-2.5	3.3	0.8	0.35	St gal Ni	11.8	6.3	5.2	14.5	3K	24K	48FR08-20HE	

Germany +49 (0) 202 460 3468

Europe +421 43 583 1311

United Kingdom +44 (0) 1986 891516



making the connection



FM 09860

2.0 - 2.5

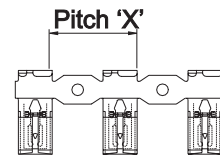
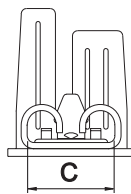
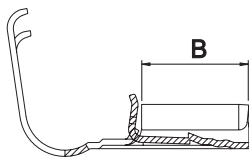
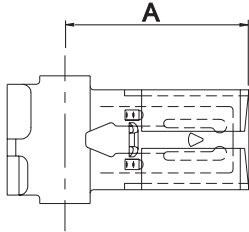
Flag Receptacles, Locking

Winkel- Flachsteckhülse Verriegelbar

Clips Drapeaux, Avec Verrouillage



4.8
x 0.5



Wire Range	Max.Ins	Tab Thickness	Mat Thickness	Material	A	B	C	X	Reel Size	Carton Size	Part Number	Approvals
Nennquerschnitt	Stift	Steckerdicke	Mat.dicke	Werkstoff	A	B	C	X	Spulen gröss	Menge pro karton	Best Nr	Zulassungen
Section câble	Gaine	Epaisseur languette	Epaisseur matériau	Matériau					Bobines à	Cartons à	Code Nr	Homologations

0.5-1.0	2.9	0.5	0.35	CuZn	10.8	6.3	5.2	14.5	3K	24K	48FL05-10DB	
0.5-1.0	2.9	0.5	0.35	CuZn gal Sn	10.8	6.3	5.2	14.5	3K	24K	48FL05-10DC	
0.5-1.0	2.9	0.5	0.35	CuSn	10.8	6.3	5.2	14.5	3K	24K	48FL05-10DA	
0.5-1.0	2.9	0.5	0.35	CuSn gal Sn	10.8	6.3	5.2	14.5	3K	24K	48FL05-10DG	
0.5-1.0	2.9	0.5	0.35	CuNi Zn	10.8	6.3	5.2	14.5	3K	24K	48FL05-10DD	
0.5-1.0	2.9	0.5	0.35	St gal Ni	10.8	6.3	5.2	14.5	3K	24K	48FL05-10DE	
1.0-2.5	3.3	0.5	0.35	CuZn	11.8	6.3	5.2	14.5	3K	24K	48FL05-10HB	
1.0-2.5	3.3	0.5	0.35	CuZn gal Sn	11.8	6.3	5.2	14.5	3K	24K	48FL05-10HC	
1.0-2.5	3.3	0.5	0.35	CuSn	11.8	6.3	5.2	14.5	3K	24K	48FL05-10HA	
1.0-2.5	3.3	0.5	0.35	CuSn gal Sn	11.8	6.3	5.2	14.5	3K	24K	48FL05-10HG	
1.0-2.5	3.3	0.5	0.35	CuNi Zn	11.8	6.3	5.2	14.5	3K	24K	48FL05-10HD	
1.0-2.5	3.3	0.5	0.35	St gal Ni	11.8	6.3	5.2	14.5	3K	24K	48FL05-10HE	

Germany +49 (0) 202 460 3468

Europe +421 43 583 1311

United Kingdom +44 (0) 1986 891516



making the connection



FM 09860

2.0 - 2.6

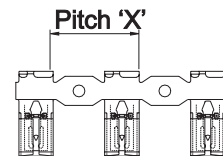
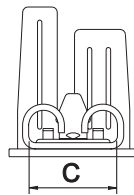
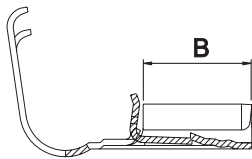
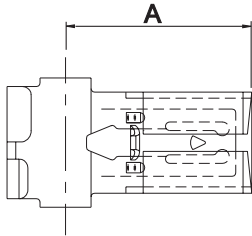
Flag Receptacles, Locking

Winkel- Flachsteckhülse Verriegelbar

Clips Drapeaux, Avec Verrouillage



4.8
x 0.8



Wire Range	Max.Ins	Tab Thickness	Mat Thickness	Material	A	B	C	X	Reel Size	Carton Size	Part Number	Approvals
Nennquerschnitt	Stift	Steckerdicke	Mat.dicke	Werkstoff	A	B	C	X	Spulen grösse	Menge pro karton	Best Nr	Zulassungen
Section câble	Gaine	Epaisseur languette	Epaisseur matériau	Matériau					Bobines à	Cartons à	Code Nr	Homologations

0.5-1.0	2.9	0.8	0.35	CuZn	10.8	6.3	5.21	14.5	3K	24K	48FL08-10DB	
0.5-1.0	2.9	0.8	0.35	CuZn gal Sn	10.8	6.3	5.21	14.5	3K	24K	48FL08-10DC	
0.5-1.0	2.9	0.8	0.35	CuSn	10.8	6.3	5.21	14.5	3K	24K	48FL08-10DA	
0.5-1.0	2.9	0.8	0.35	CuSn gal Sn	10.8	6.3	5.21	14.5	3K	24K	48FL08-10DG	
0.5-1.0	2.9	0.8	0.35	CuNi Zn	10.8	6.3	5.21	14.5	3K	24K	48FL08-10DD	
0.5-1.0	2.9	0.8	0.35	St gal Ni	10.8	6.3	5.21	14.5	3K	24K	48FL08-10DE	
1.0-2.5	3.3	0.8	0.35	CuZn	11.8	6.3	5.21	14.5	3K	24K	48FL08-10HB	
1.0-2.5	3.3	0.8	0.35	CuZn gal Sn	11.8	6.3	5.21	14.5	3K	24K	48FL08-10HC	
1.0-2.5	3.3	0.8	0.35	CuSn	11.8	6.3	5.21	14.5	3K	24K	48FL08-10HA	
1.0-2.5	3.3	0.8	0.35	CuSn gal Sn	11.8	6.3	5.21	14.5	3K	24K	48FL08-10HG	
1.0-2.5	3.3	0.8	0.35	CuNi Zn	11.8	6.3	5.21	14.5	3K	24K	48FL08-10HD	
1.0-2.5	3.3	0.8	0.35	St gal Ni	11.8	6.3	5.21	14.5	3K	24K	48FL08-10HE	

Germany +49 (0) 202 460 3468

Europe +421 43 583 1311

United Kingdom +44 (0) 1986 891516



making the connection



FM 09860

2.0 - 2.7